

ALWAYS MOVING IN MINING

*Unearthing progress,
delivering results.*



With us you are Number One





WHY PARTNER WITH ENGEN?

When you choose Engen, you're not just choosing a supplier; you're choosing a path to unlocking company growth, strengthening community bonds, and ensuring operational continuity through sustainability.

Our dedicated mining team, Fluidlink Asset Performance Management (APM) services, localisation partnerships, chemicals, fuels, and lubricants are all designed to optimise your mining operation's output and revenue.

At Engen, we're more than an energy solutions brand; we stand for a commitment to progress. Let's forge ahead together and ensure that your journey is marked by safety, productivity, and a lasting impact on your company, community, and the world around you.



Fuels



Lubricants



Chemicals



Energy Solutions

THE ENGEN DIFFERENCE



SECURITY OF SUPPLY

Engen has a market leading fuel and lubricant distribution network that ensures your business always has the required high-quality products On-Time and In-Full (OTIF). Our comprehensive support and infrastructure footprint includes multiple bulk lubricant and fuel terminals. Engen holds additional stock in strategic locations nationally to reduce your business risk.



MINIMISING DOWNTIME

Engen's commitment to your success means we keep your operations running smoothly. With our reliable fuels, lubricants, and Fluidlink Asset Performance Management (APM) services, we help you reduce equipment downtime, ensuring uninterrupted production and revenue streams.



SMME DEVELOPMENT

As a BBBEE Level 1 local partner, Engen is experienced in developing and implementing Enterprise Supplier Development and Corporate Social Investment programs. This allows us to partner with our mining customers to meet their 'Mine Community Development' and 'Inclusive Procurement, Supplier and Enterprise Development' Mining Charter targets.



PARTNERSHIP APPROACH

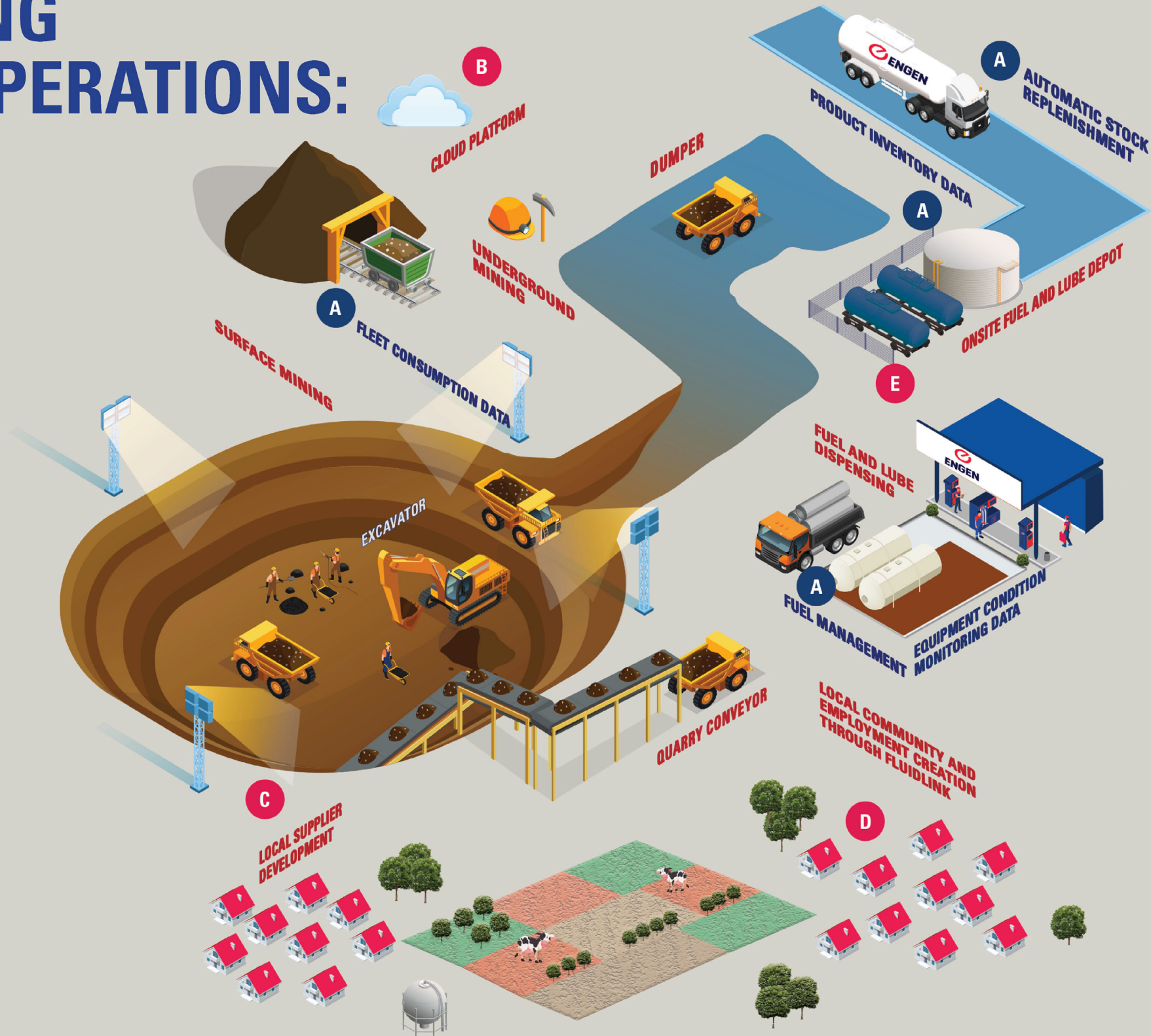
Through personalised support, and innovative solutions, we help you reduce operational costs while maintaining top-tier performance and revenue.



SEAMLESS OPERATIONS

Engen offers more than just energy solutions; we provide a seamless journey to success. Our commitment to progress ensures that your mining operation runs with safety, productivity, and a positive impact on your company and the world.

ENHANCING MINING OPERATIONS:



A

DIGITAL SOLUTIONS INTEGRATED IOT PLATFORM

- Real time fuel and lubricants fleet fluid consumption
- Identification of efficiency improvement opportunities
- Fuel consumption analytics
- Fluid and equipment condition monitoring sensors
- Fuel management system integration
- Automatic stock replenishment system
- Real time inventory monitoring to reduce fuel theft

B

WEB-BASED PLATFORM FOR GOVERNANCE REPORTING

- Carbon footprint reporting
- Tax Rebates and Claims
- Used oil recovery
- Inventory reconciliation
- Used oil management and recovery

C

ENTERPRISE AND SUPPLIER DEVELOPMENT

- Provide ESD funding support
- Business capacity training
- HSEQ support
- Prioritise integration of black-owned local vendors into the supply chain

D

ENGEN SOCIO-ECONOMIC DEVELOPMENT

- We offer Engen maths and science schools
- Caring for Girls programme
- Local employment creation through Fluidlink Asset Performance Management (APM)

ENGEN fluid link

E

ON-SITE FUEL DEPOT MANAGEMENT

- Engen Fuels and Lubricants with Integrated Supply
- Vendor Managed Inventory
- Fuel Dispensing Services
- Fuel Management System
- Fluid Management System

ENGEN'S SUPPLY CHAIN MASTERY: SECURING SOUTH AFRICA'S ENERGY LANDSCAPE

Mapping Our Success: Unleashing Supply Chain Excellence Across South Africa

1
Oil Blend Plant
LOBP - ENGEN LUBE
OIL BLEND PLANT

20
Fuel Terminals
& Depots

5
Lubricant
Distribution
Centres

5
Lubricants
& Chemical
Depots

Bulk Distribution Centres

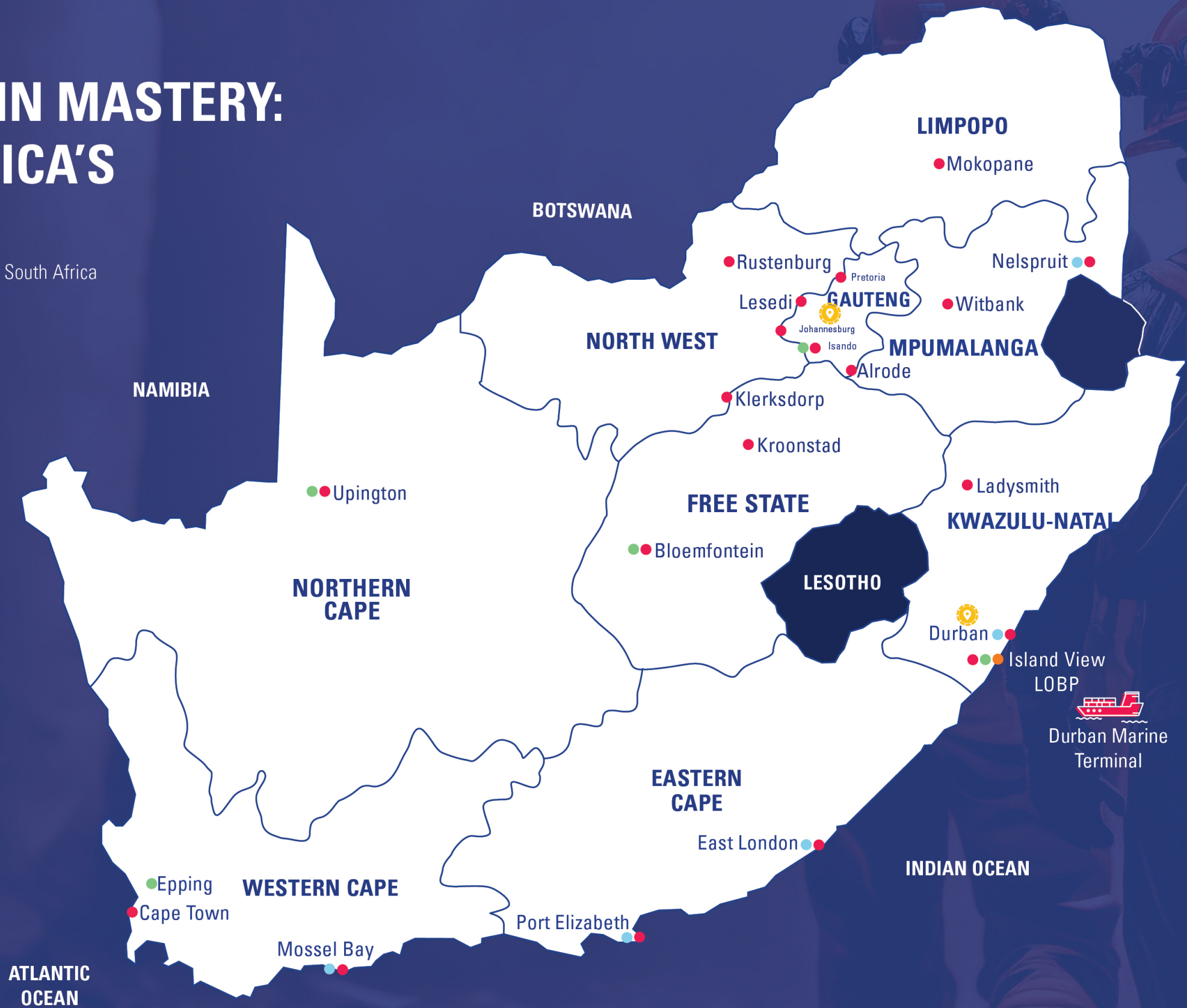


Durban (Lube Oil Blend Plant)
Bulk Storage Lubes & Distribution



Johannesburg (Isando)
Bulk Storage Lubes & Distribution

150 ENGEN-owned delivery vehicles
3 Billion litres of fuel delivered p/a
120 Million litres of lubricants production capacity p/a



Durban Marine Terminal

AN EXTENSIVE RANGE OF PRODUCTS FOR THE BEST PERFORMANCE

ADBLUE®

Superior diesel emission fluid that delivers reduced carbon footprint.

BENEFITS

- Reducing harmful emissions: AdBlue® helps reduce the emission of nitrogen oxide
- Better fuel efficiency and lower operating costs
- Extends the lifespan of your vehicle's Selective Catalytic Reduction (SCR) system



ENGEN HYDROKIN ESF (HYDRAULIC FLUID)

Superior lubrication and lower frictional coefficient under tough operating conditions to reduce costs

BENEFITS

- Saves energy – up to 11%
- Reduced oil operating temperature



ENGEN DYNAMIC DIESEL WITH PRO-DRIVE

Dynamic Diesel with Pro-Drive 10ppm and 50ppm sulphur content makes it ideal for underground mining diesel applications with advanced additive technology that quickly and dramatically restores diesel engine cleanliness throughout the fuel distribution system.

BENEFITS

- Counteracts injector fouling to prevent power loss, increase fuel economy, and reduce emissions
- Substantially reduces foam forming resulting in spill free, cleaner, and more efficient refuelling and longer intervals between refuels
- Provides excellent protection against corrosion



DIESELUBE 700 SUPER

Engen Dieselube 700 Super has been re-engineered to ensure compatibility with exhaust after treatment devices incorporated into the latest heavy-duty diesel engines, thereby assisting with emissions reduction.

BENEFITS

- Excellent control over soot-induced wear
- Prevents high-temperature damage across engine lifecycle, contamination and build-up of deposits for extended engine life.
- Provides excellent control over high temperature piston deposits, bore polishing, corrosion, foaming and oxidation stability
- Superior cleanliness at extended drain intervals for all heavy-duty diesel engines



ENGEN FLUIDLINK ASSET PERFORMANCE MANAGEMENT

Reliable onsite support with a hands-on Fluidlink team overseeing your asset condition management programme within your operating environment. A complete end-to-end Asset Management Programme that frees up your time so that you can focus on your core business. We're dedicated to providing you with peace of mind, making sure your equipment is taken care of.



BENEFITS

- Increased plant uptime via comprehensive reliability management
- Minimise unplanned outages and costly, unforeseen repair work to maximise productivity and optimise revenue generation
- Lower costs, efficient product use and inventory management
- Leverage the industrial Internet of Things (IoT) and digitalisation to make your operation agile and efficient

ENGEN SOLAR AND BATTERY BACK-UP SOLUTION

Increase availability of onsite Fuel and Lubricant Dispensing through electricity outages. The system can be customised to fit the purpose and includes both Solar panels and Lithium-Ion Battery back-up.

BENEFITS

- Reduced cost of power consumption.
- Battery back-up ensures continuous operations.
- Reduce greenhouse gas emissions



CORPORATE SOCIAL INVESTMENT

ENABLING A BETTER AND BRIGHTER FUTURE



ENGEN MATHS AND SCIENCE SCHOOLS

Engen has helped numerous underprivileged learners go on to graduate as engineers, IT specialists, accountants, and medical doctors by providing supplementary tuition at the Grade 10 – 12 level.



ENGEN COMPUTER SCHOOL

Engen has also spearheaded a programme teaching basic IT skills to unemployed adults that is geared towards promoting computer literacy empowerment and increased job opportunities.



STEM LEARNER & TEACHER DEVELOPMENT

As an avid supporter of education in the country and a goal to improve the quality of Maths and Science education, Engen has created a programme to improve critical thinking and skills in STEM subjects.



DESIGN 35

Engen is also active in identifying and showcasing tomorrow's next visual artists, giving a bursary education opportunities to the winner and work exposure on 35 spaza shops to selected entrants.



ENGEN SANITARY TOWELS PROGRAMME

Reduction of menstrual period related school absenteeism. Engen donations of feminine health products to underprivileged schools.



ENGEN KO CHALLENGE AND CHAMP OF CHAMPS

Engen Knock Out sponsors the most prestigious youth soccer tournament with over 30 000 players participating since 2003 through its youth soccer development programme.

LOCAL ENTERPRISE DEVELOPMENT

WHAT WE FOCUS ON TO SUPPORT OF SMMES

We extend a diverse range of support to our SMME partners. Because what matters to our local communities, matters to us.



ENGEN CONVOY FUND

The Engen Convoy Fund is our Enterprise and Supplier Development (ESD) Fund which promotes Broad-Based Black Economic Empowerment (B-BBEE) with an objective of maximising socio-economic development by providing sustainable support to SMMEs and integrating them into Engen's business value chain.



TRAINING

- Product and Technical training
- HSEQ
- Tender application support
- Sales training:
 - Order placement/invoicing
 - Pricing/quotations



GROWTH

- Co-create a sales pipeline and track plans
- Assist SMME in supporting smaller Engen accounts in the area



ONGOING SUPPORT

- Products and Services
- Field Technical Support for SMME customers
- Marketing – Sales aids/brochures/events
- Brand development
- Provide professional proposal templates and other sales/technical support



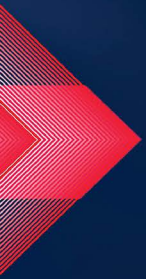
ENABLERS

- Asset Finance – Equipment Loan for Trade (ELT) model
- Favourable Credit terms
- Prioritised ordering and delivery of product (Security of supply)



EMPOWERMENT

- Empower SMME partner for success by:
 - Formally supporting SMME to supply mining operations
 - Co-lead key account customer conversations



GET IN TOUCH



WEBSITE

www.engen.co.za
info@engen.co.za



PHONE NUMBER

+27 8600 36436



SALES

1call@engenoil.com

TECHNICAL SUPPORT

csctechnical@engenoil.com

FLUIDLINK SERVICES

FluidlinkAPM@engenoil.com

